 Connection offline
Service campaign 34F4
Replacing gear oil
Notes

Transaction No.: 2035734/5
Release date: 07-Mar-2014

 [Repair instructions](#)

Technical background

On Audi vehicles with 7-speed dual clutch gearbox (DSG) manufactured within a specific period, conductive deposits may form in the gearbox control unit (due to electrolysis). These may cause short-circuits and cause the gearbox fuse to blow. The clutches open due to the power supply failure and the vehicle will roll to a stop.

Remedy

On the vehicles affected, the gear oil must be replaced and a software update must be carried out for the gearbox control unit.

Customer notification

You should contact customers with affected vehicles by telephone to notify them of this service campaign.



Please check with your Importer whether the mobility option for field campaigns can be offered in your market and, if so, under what conditions.

Please ensure that all affected vehicles are checked and repaired during the next service visit. Make a note of the required service campaign on the workshop order before it is signed by the customer.

If it is omitted to perform the required work during a workshop visit, notify the customer about the service campaign immediately.

You should also pass on this information to your new and used car sales departments so that the vehicles affected are checked and, if necessary, repaired immediately.

Warranty accounting instructions

SAGA code

Damage number:	34F4 0099 002
Repair code:	AP/repair operation: damage cause
Type of claim:	7 10 = Campaign implemented on registered vehicle 7 90 = Campaign implemented on vehicle that has not yet been registered
Criteria: (processing-related)	8X = Audi A1 8P = Audi A3 8V = Audi A3 8J = Audi TT

Labour (APOS)

Criterion	Work	APOS	TU
All	Replace gear oil, then connect battery charger and vehicle diagnostic tester, update gearbox control unit and perform basic setting with adaption drive	34 35 17 99	180

Labour (APOS/2)

Criterion	Work	Diagram item	TU
		Base part number	
		Work	
All	Replace gear oil, then connect battery charger and vehicle diagnostic tester, update gearbox control unit and perform basic setting with adaption drive	T20-00-?? ¹⁾ 34F4?? ¹⁾ 98	180

¹⁾ Enter the relevant criterion.

Material

Criterion	Designation	Part No.	Quantity
	Gear oil (mineral oil)	G 052 512 S0	19

Mobility option for field campaigns

Please contact your Importer.

Genuine parts

Quantity	Designation	Part No.	Remarks
1.9 ltr.	Gear oil (mineral oil)	G 052 512 **	
1	Bottle	000 012 147 A	General servicing materials - cannot be charged to AUDI AG (reusable)

) depending on size of container. Containers are currently available in the sizes **A2, **A6**, **A9**.



Caution!

In some markets, oil with part number G 052 512 is also available in container size S1. This is in fact central hydraulic system fluid and it must not be used.



- The software is supplied online.
- If the software is not available on your workshop server, please contact your Importer.

Parts supply

The required genuine parts should be ordered in all cases according to requirements from your Importer.

Parts despatch control

Not applicable

Repair instructions



Technical background

On Audi vehicles with 7-speed dual clutch gearbox (DSG) manufactured within a specific period, conductive deposits may form in the gearbox control unit (due to electrolysis). These may cause short-circuits and cause the gearbox fuse to blow. The clutches open due to the power supply failure and the vehicle will roll to a stop.

Check

If the vehicle is not already listed as repaired in the "vehicle-specific notes" (in Service Online or ELSA), check the Service Schedule for the entry '**34F4 completed**'. If the entry is not listed, carry out the required work in accordance with instructions.

Genuine parts

Quantity	Designation	Part No.	Remarks
1.9 ltr.	Gear oil (mineral oil)	G 052 512 **	
1	Bottle	000 012 147 A	General servicing materials - cannot be charged to AUDI AG (reusable)

) depending on size of container. Containers are currently available in the sizes **A2, **A6**, **A9**.



Caution!

In some markets, oil with part number G 052 512 is also available in container size S1. This is in fact central hydraulic system fluid and it must not be used.



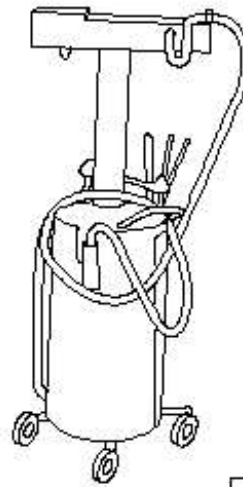
- *The software is supplied online.*
- *If the software is not available on your workshop server, please contact your Importer.*

Tools

Special tools, test equipment and auxiliary items required

- Used oil collection and extraction unit -V.A.G 1782-

V.A.G 1782



W00-10211

- Adapter for oil filling -
VAS 6262 A- with -VAS 6262/4-

VAS 6262 A



W00-10811

- Diagnostic tester (e.g. VAS 6160)



- Battery charger -VAS 5900- or -VAS 5903-

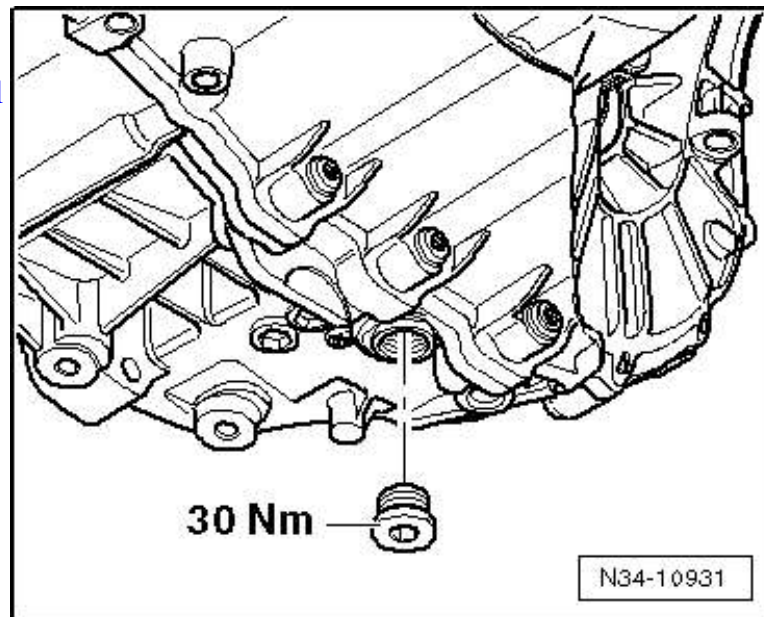


Work

Replacing gear oil

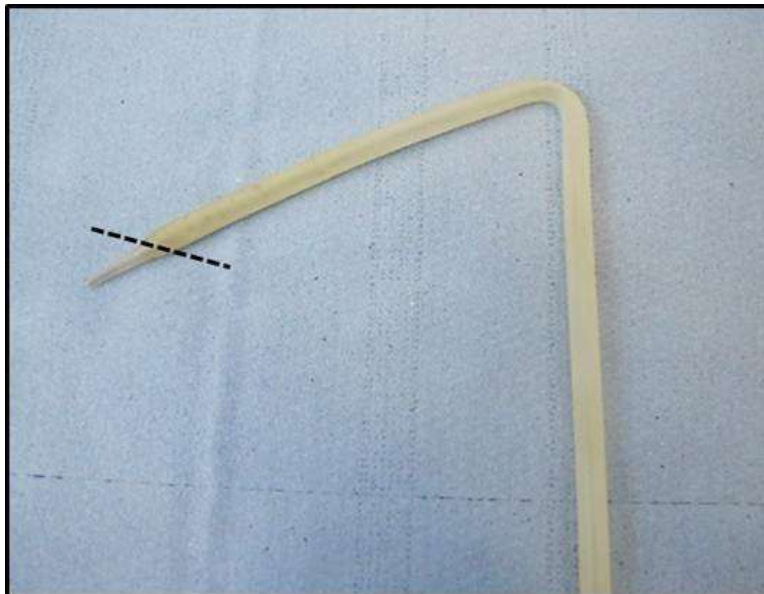
- Drain gear oil.

=> Workshop Manual, 7-speed dual clutch gearbox 0AM (S tronic);
Rep. gr. 34; "Renewing gear oil"

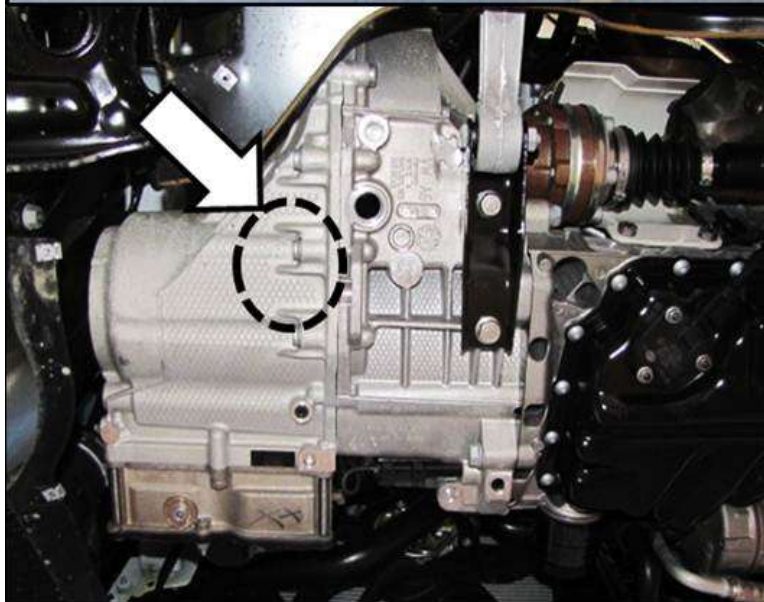


Draw off remaining amount of gear oil as follows:

- Cut off tip of suction tube as shown.



The remaining oil collects in the lowest part of the gearbox housing (marked area).



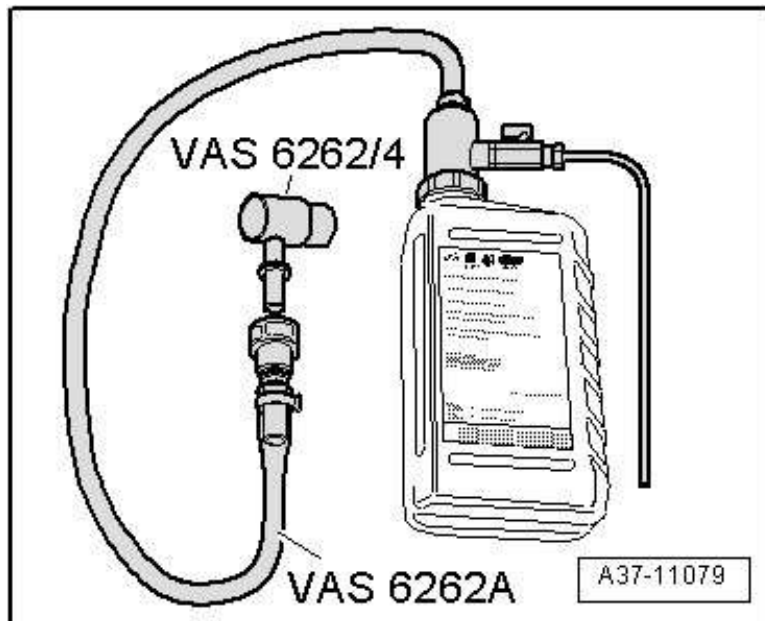
- Guide suction tube of bottle into marked area (lowest part of gearbox housing) and draw off remaining gear oil.

- A quantity of up to 100 ml of oil can remain in the housing.



- Fill up with **1.9 ltr.** of gear oil **G 052 512 ****.

=> Workshop Manual, 7-speed dual clutch gearbox 0AM (S tronic);
Rep. gr. 34; "Renewing gear oil"



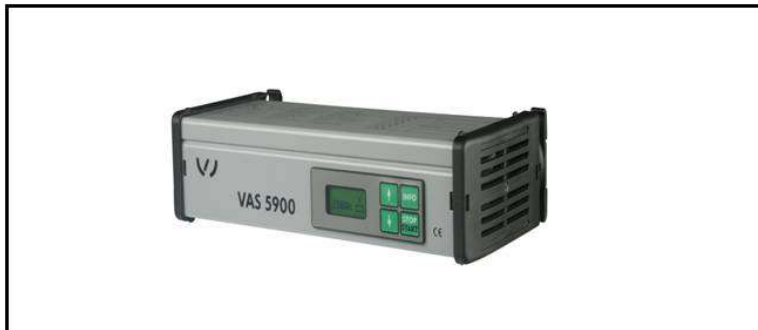
Software update with SVM code 34F4A001



- *Because of the large amount of data that has to be transferred for a software update, please note that the remote diagnosis head VAS 5054 must always be connected to the diagnostic tester via the USB cable port, and not via the Bluetooth USB interface.*

- Connect battery charger to vehicle.
Select standby mode on battery charger.

- Switch off all unnecessary electrical equipment (blower, seat heater, interior light, etc.).



- Connect diagnostic tester to vehicle.

- Select "Flash" mode.

- Perform a software update with SVM code **34F4A001**.

Performing basic setting

Change (from "Flash" mode) to "Diagnosis" mode:

- Select "Control units" tab -1-
- Start diagnosis -2-

- Identify vehicle.
- Select 02 - Gearbox electronics.
- Press <right mouse button> and select "Guided Functions".
- Select "02 - Basic setting complete" and start program.
- Perform basic setting and adaption drive.

- When quitting the program, send flash log (online).



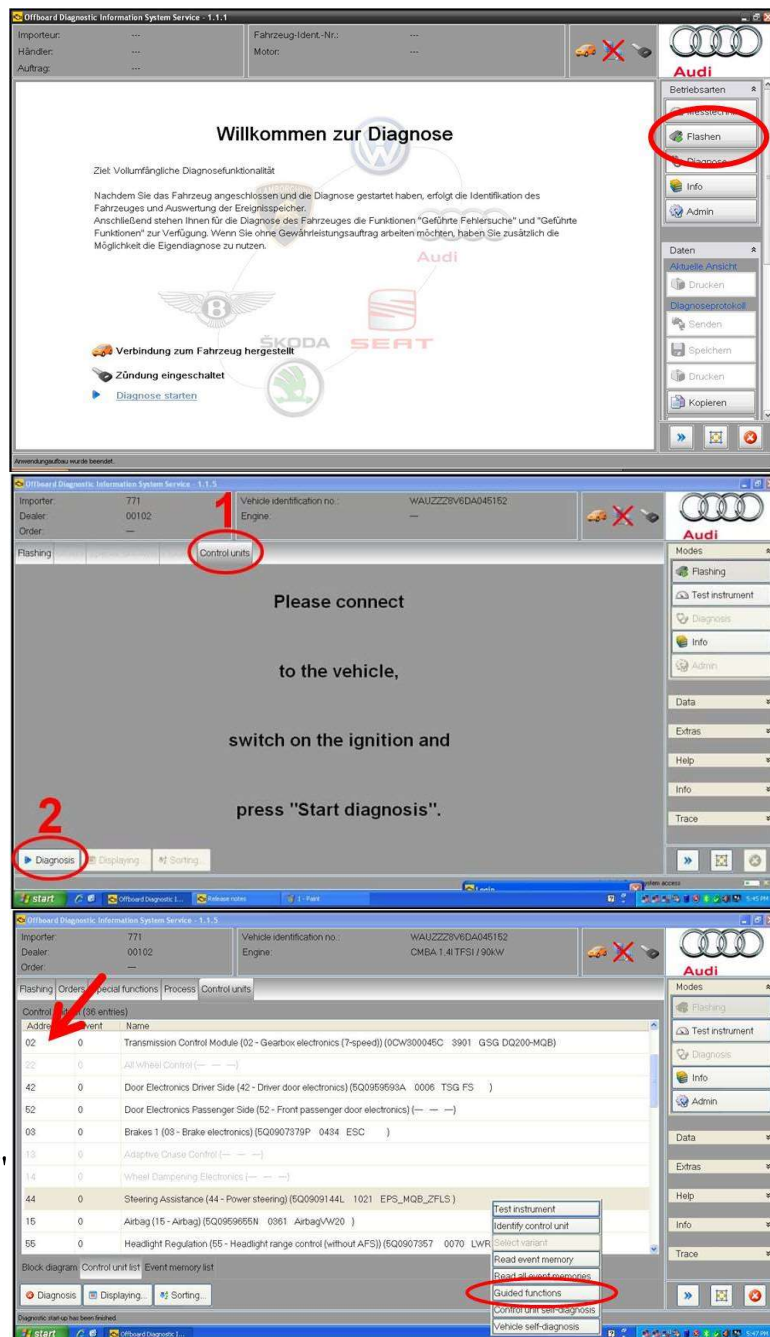
- If you require any assistance when performing the software update, please submit a technical repair query in DISS:

Workshop coding: Vehicle service => IT systems => SVM (Software Versions Management)

Identification

Vehicles with Digital Service Schedule:

After completing **all** required work (all criteria), enter "34F4 completed" in the <Workshop remarks> text field of the Digital Service Schedule. The complete record of service events must then be printed out and filed in the Service Schedule.



Vehicles without Digital Service Schedule:

After completing **all** required work (all criteria), make the entry "34F4 completed" (including date and workshop stamp) in the first vacant box in the Service Record section or in the section for Workshop remarks.

Number	Revisions
2035734/1	First edition
2035734/2	Header data altered.
2035734/3	Header data altered.
2035734/4	Header data altered.
2035734/5	Genuine parts: Notes regarding gear oil added

 [Repair instructions](#)  [Notes](#)